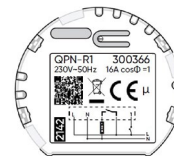
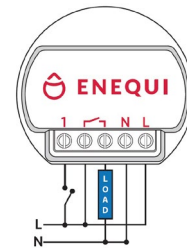
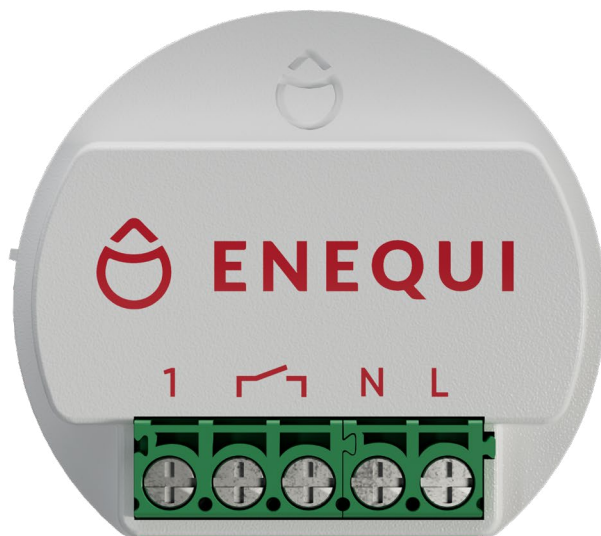


TECHNICAL SPECIFICATION

QuiPower Node Relay



QPN-R1

Energy node with relay functionality for mounting in wall box behind switches or with holder for DIN-rail in distribution box. Equipped with one input connection for functions such as: On/Off, Astro, Scheduling, Countdown Time and Grouping. The input has up to 5 clicks to activate different programs. Build a flexible system with several nodes via Bluetooth Mesh that can easily be extended later. Built-in program memory and backup power in the event of a power failure.

Order data:

Model name: QPN-R1
Article number: 300366
E number: E13 607 77

Key features

- Bluetooth® 5 with mesh-technology
- Small build-in size: 44 x 39 x 18 mm, one of the smallest on the market.
- Built-in backup power during power failure, approx. 4 hours.
- Manages loads up to 16 A with use of zero crossing technology for long relay life



QuiPower Node App

Through the QuiPower App, all lighting settings and rooms can be configured, and one or more systems can be managed and transferred.



ENERGY TRANSFORMATION IS HERE. IT'S TIME TO TAKE CHARGE.

TECHNICAL SPECIFICATION

QuiPower Node

Relay

QPN-R1

Technical data

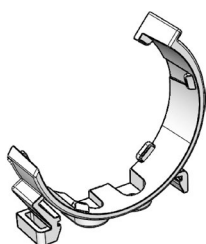
Relay contact data:	16 A / 250 VAC $\cos \phi = 1$ Low voltage transformer 1800 W AC motor: 2.4 A 230VAC $\cos \phi = 0.95$ LED-lamp 200 W
Mains voltage:	230 VAC / 50Hz
Standby effect:	0,2 W
Time back-up during power failure:	4 h
Enclosure class:	IP20
Dimension:	44x39x18 mm
Operating temperature:	-20 °C - +35 °C
Radio:	2.4 GHz, Bluetooth® 5
Range:	Approx. 15 m indoors, 150 m at clear view, depending on environment and installation factors.
Protection:	Soft-/hardware protection against temperature, overload and fuse.
Manufacturer:	Enequi AB
Standards:	CE acc. EN 60699-2-1, RED 2014/53/EU, RoHS II & REACH

The Bluetooth® word mark and logos are registered trademarks owned by Bluetooth SIG, Inc. and any use of such marks by Enequi AB is under license. Other trademarks and trade names are those of their respective owners.

This information can contain printing errors and specifications can be changed without prior notice.

Holders for DIN-rail are available as accessories

- Model name: QPN-MB
- Article number: 300403
- E number: E1360778



Kung Hans väg 3
192 68 Sollentuna
Sweden

+46 (0)10 - 122 17 00
info@enequi.com
www.enequi.com